

ClubRunner

[Help Articles](#) > [Club Help](#) > [Club - Administration Guide](#) > [Attendance](#) > [Barcode Module](#) > [How do I setup the Symbol/Motorola/ZEBRA CS3000 barcode scanner?](#)

How do I setup the Symbol/Motorola/ZEBRA CS3000 barcode scanner?

Zach W. - 2021-03-17 - [Barcode Module](#)

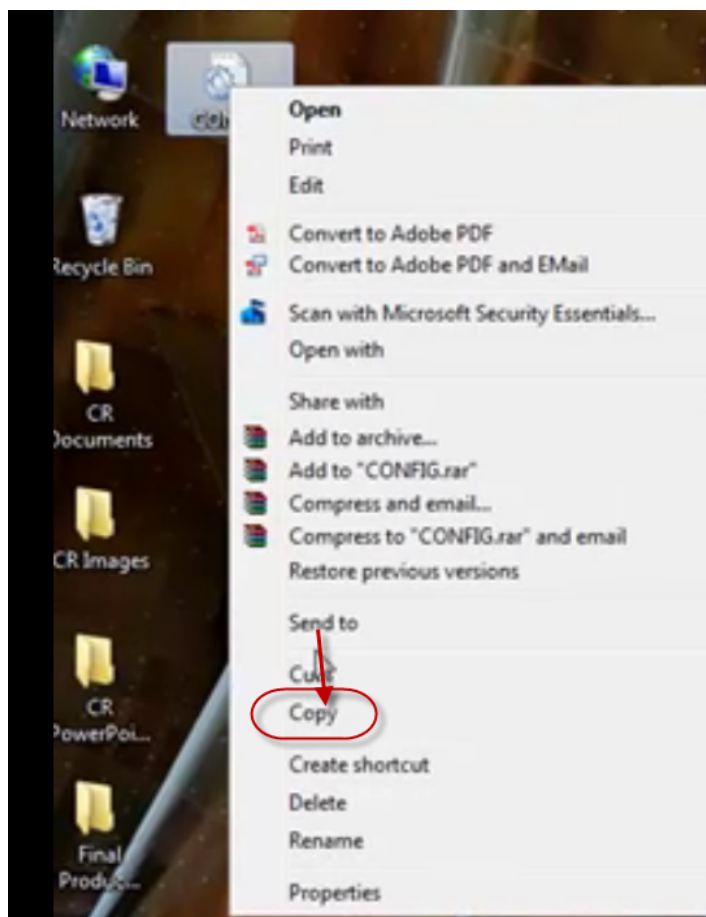
When you first receive your CS3000 Barcode Scanner, by default, the barcode scanner is setup with a time stamp within the barcode.txt file. These time stamps will interfere with your upload into ClubRunner.

Note: This article applies to all CS3000 Barcode scanners, such as those made by Motorola, Symbol, and Zebra

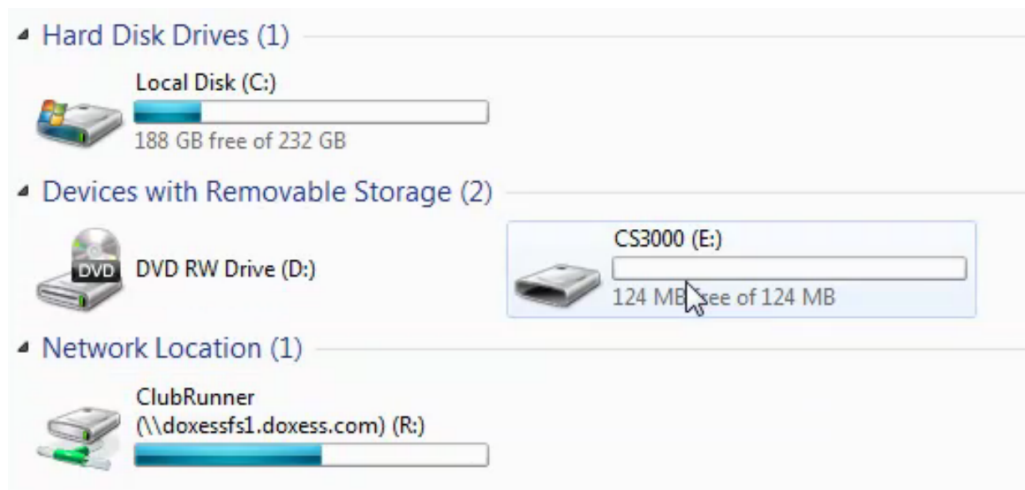
You must replace the [Config.ini](#) file installed on the scanner with the one attached in the this article below. Please use the following steps to set your scanner to the correct settings:



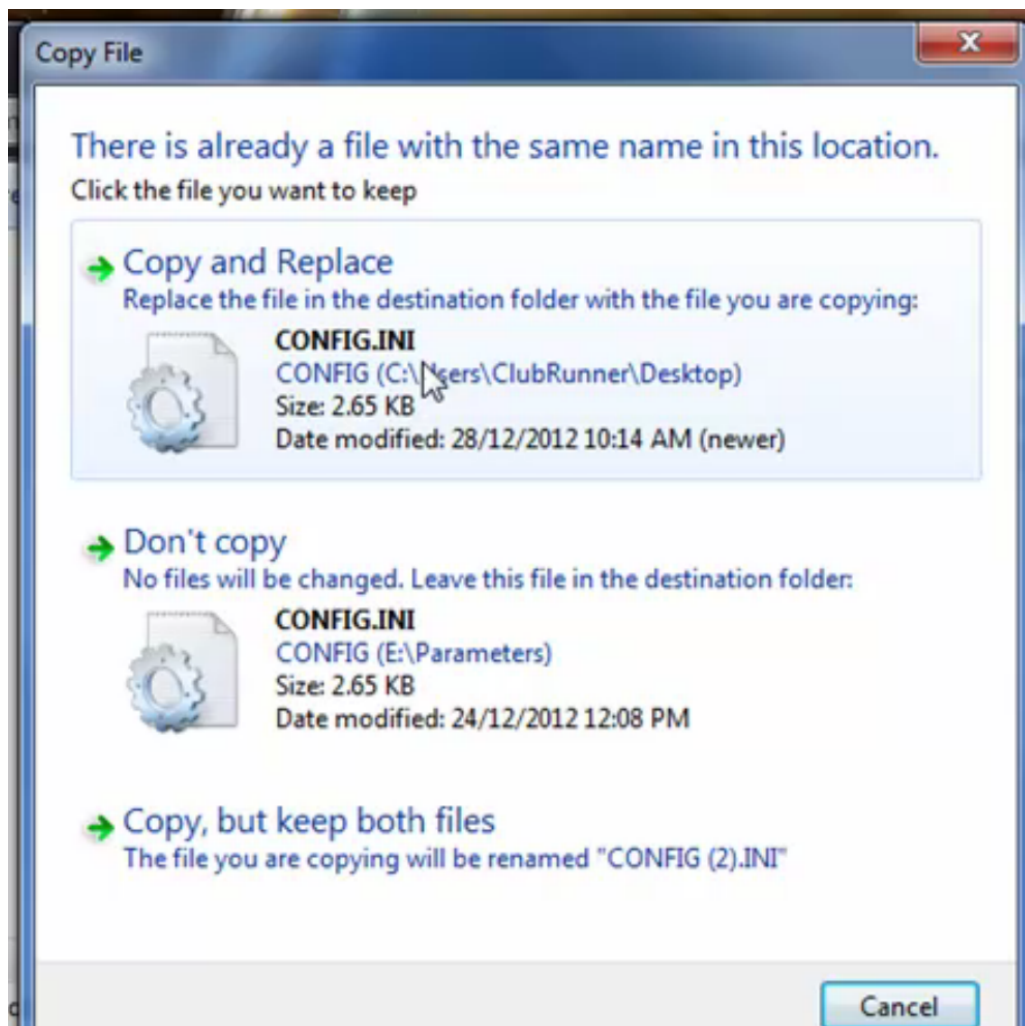
1. Download the [Config.ini](#) (**File available below**), unzip the file, copy the file within your computer (Right Mouse Click and Select **Copy**)



2. Connect the barcode scanner to the USB port of your computer and go to **My Computer**.



3. Open the **CS3000** and click the **Parameters** folder, paste the Config.ini file (You will be asked to replace the file. Click **Copy and Replace**)



4. Once the file has been replaced, your scanner is ready to be used.

[You can download the config.ini here](#)

Attachments

- [CONFIG.zip \(725.00 B\)](#)

Related Content

- [VIDEO: How do I setup the CS3000 Barcode scanner?](#)